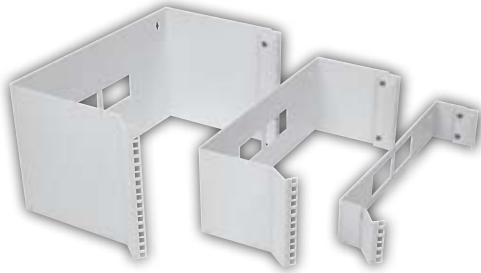


Wall Mountable Frames

19" Series Specification



Part no.	RU	External Dimensions (mm)
WF201	2	90 x 483 x 100
WF202	2	90 x 483 x 200
WF203	2	90 x 483 x 300
WF401	4	179 x 483 x 100
WF402	4	179 x 483 x 200
WF403	4	179 x 483 x 300
WF601	6	268 x 483 x 100
WF602	6	268 x 483 x 200
WF603	6	268 x 483 x 300

Wall Frame Lids



Additional Information

- All wall frames are fully swingable at 180°.
- Lids can be used top or bottom.
- Most suitable for patching.
- All fasteners provided.
- Standard colour nurse grey.

Note: Comes Individually

Part no.	Dimensions (mm)	Description
WFL11	483 x 100	Top/bottom lid Suits 100 deep wall frame
WFL21	483 x 200	Top/bottom lid Suits 200 deep wall frame
WFL31	483 x 300	Top/bottom lid Suits 300 deep wall frame