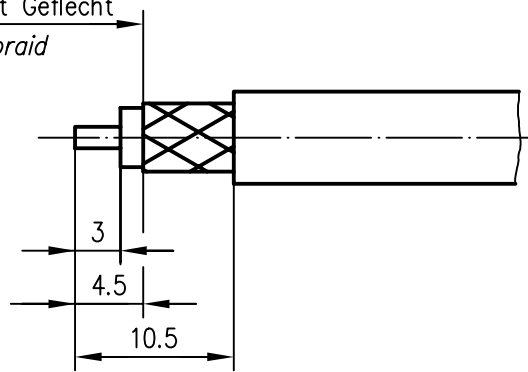
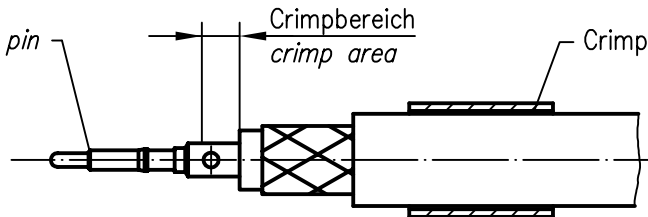
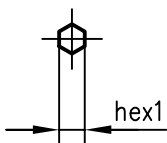


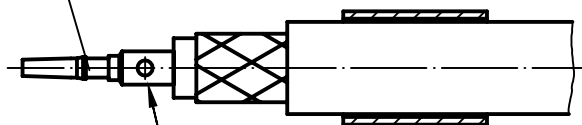
Folie bündig mit Geflecht
foil even with braid



Kontaktstift *contact pin* Crimpbereich *crimp area* Crimprohr *crimp ferrule*



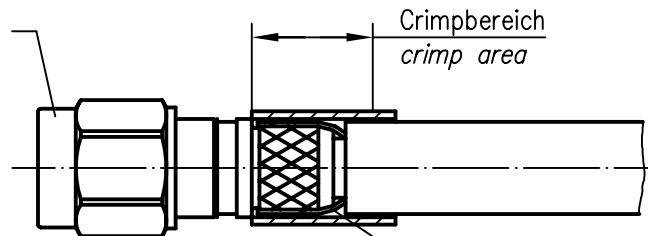
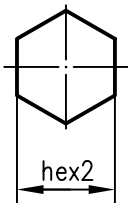
Kontaktbuchse *contact socket*



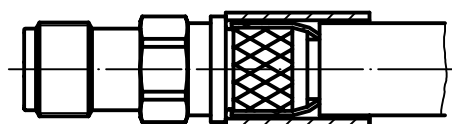
weichlöten *solder*

Gehäuse *housing*

Crimpbereich *crimp area*



Geflecht *braid*
Folie in den Crimpanschluß schieben
foil goes inside housing



XX	Crimpeinsatz <i>crimp insert</i>	6kt.1 x Länge <i>hex1 x length</i>	6kt.2 x Länge <i>hex2 x length</i>
05	N01001A0005	1.69x2.5	5.41x8
31	N01001A0056	1.69x2.5	6.48x8

h	17233	25.11.05	JA
g	16567	21.04.05	BJ
f	15491	21.04.04	GE
e	14969	07.11.03	BJ
Index <i>index</i>	Änderung <i>modification</i>	Datum <i>date</i>	Name <i>name</i>

	Datum <i>date</i>	Name <i>name</i>
Gez. <i>drawn</i>	13.04.95	HM
Gepr. <i>app'd</i>	19.04.95	BJ

Series SMA crimp/crimp; crimp/solder
Serie SMA crimp/crimp; crimp/löt

Untert.-TG-Nr.
Art **R T00100C2700**

Ersatz für/replacement for

Original **A4** Blatt **1/1**
original sheet

Maßstab **2:1**
scale

